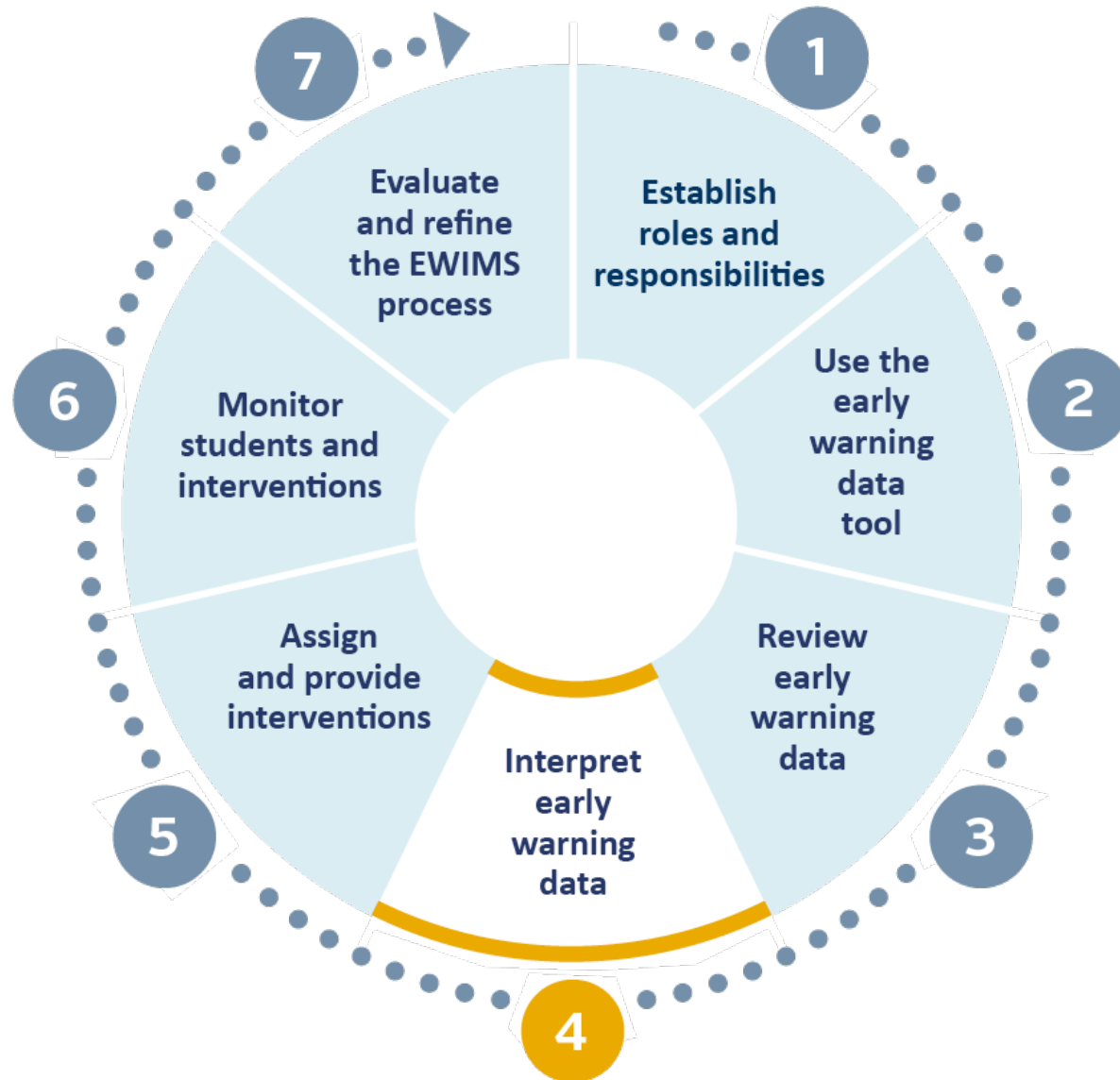




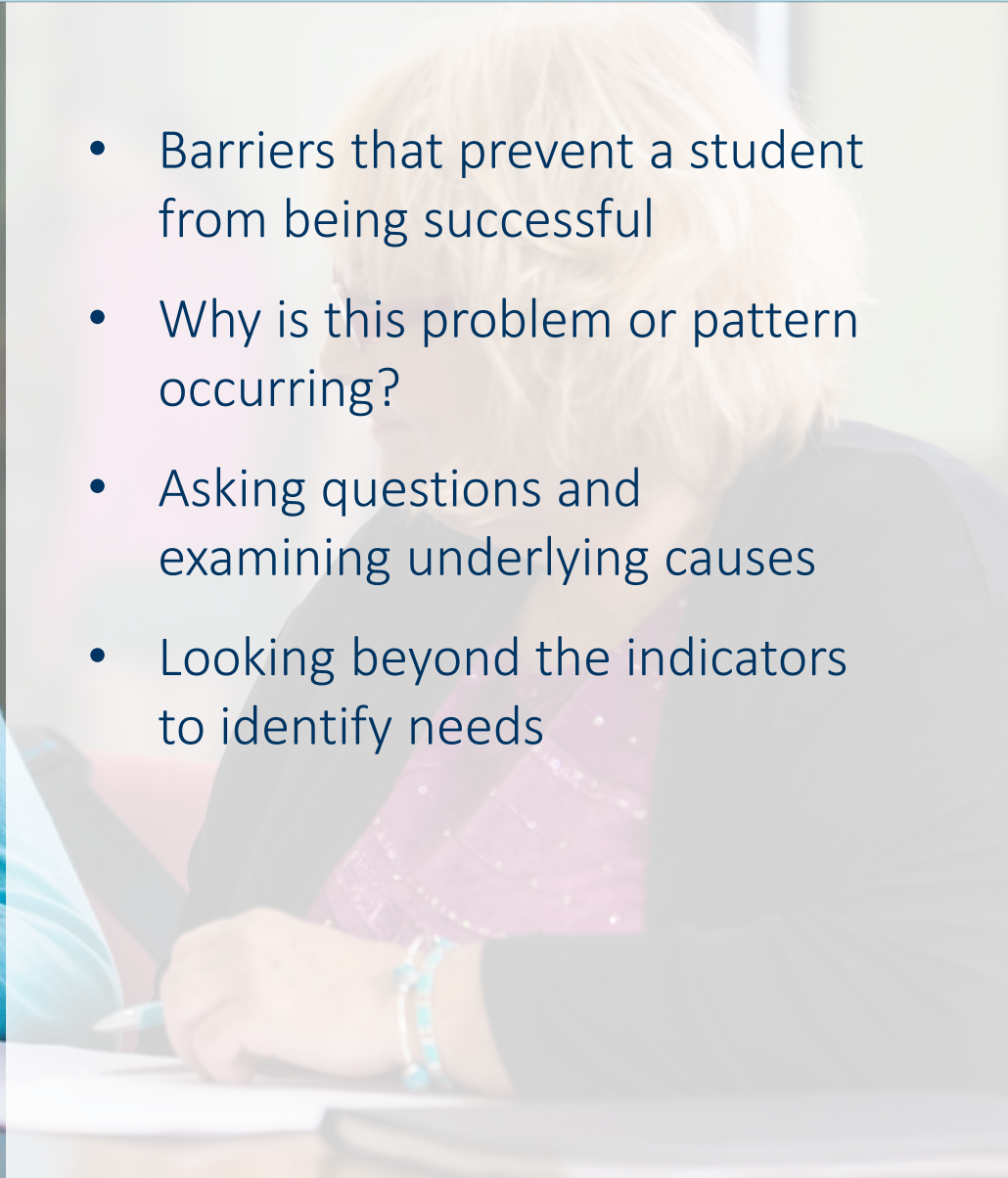
EWIMS STEP 4
Interpreting Early Warning Data

Seven-Step EWIMS Process





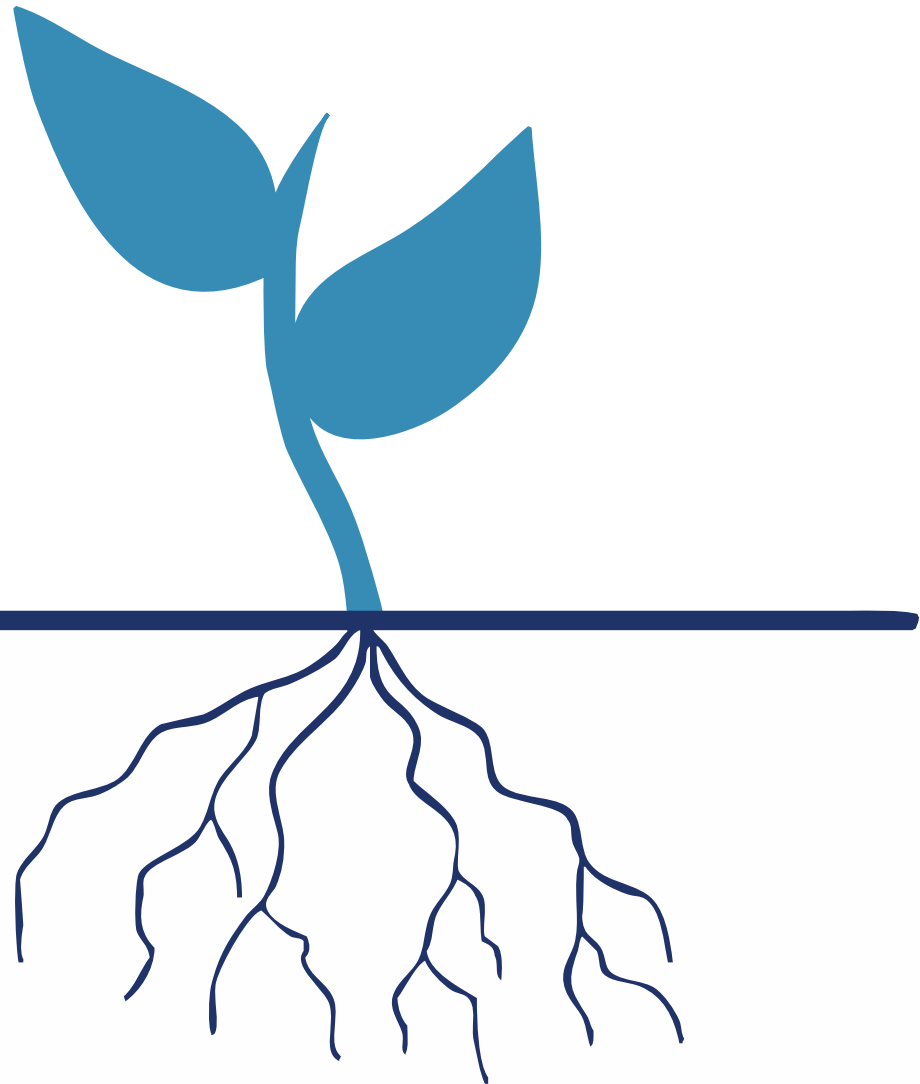
EWIMS Step 4: Interpret Early Warning Data



- Barriers that prevent a student from being successful
- Why is this problem or pattern occurring?
- Asking questions and examining underlying causes
- Looking beyond the indicators to identify needs

EWIMS Steps 3 and Step 4

What is the problem?



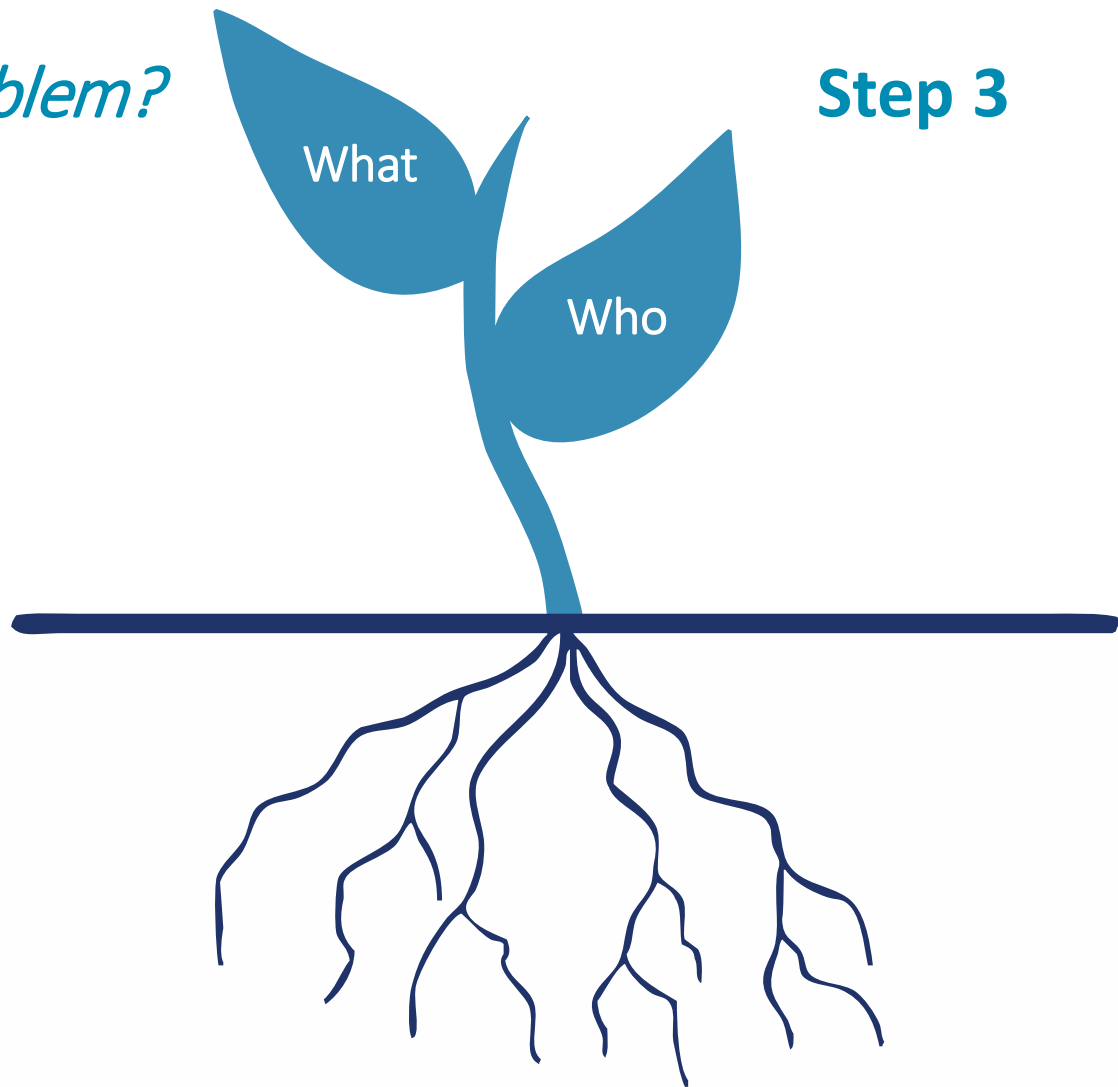
Why is it occurring?



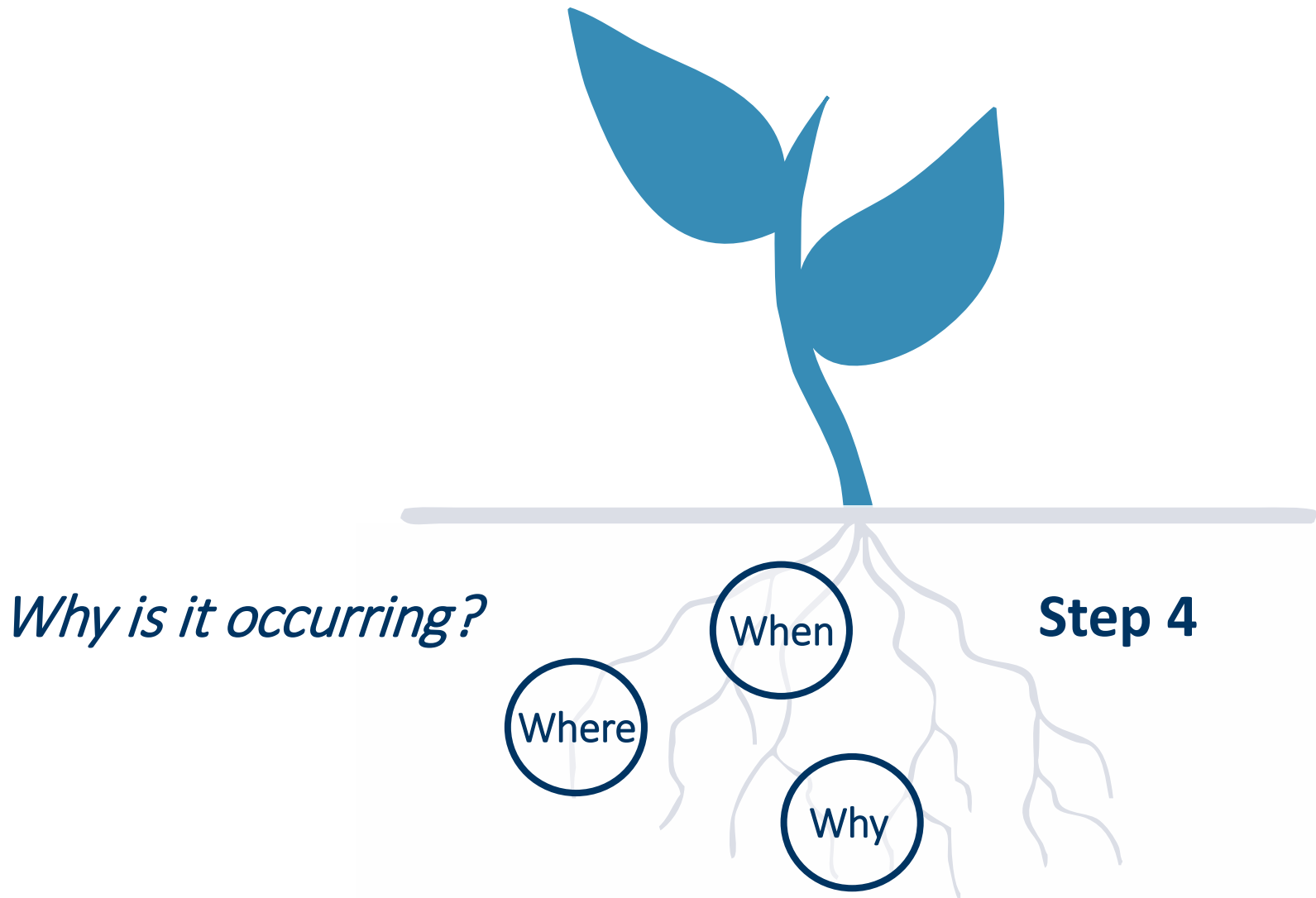
Symptoms

What is the problem?

Step 3



Underlying/Root Causes



Symptoms Versus Underlying Causes

What is the problem?

Step 3

Identify symptoms.



Why is it occurring?

Step 4

Determine
underlying causes.



Step 4 Summary

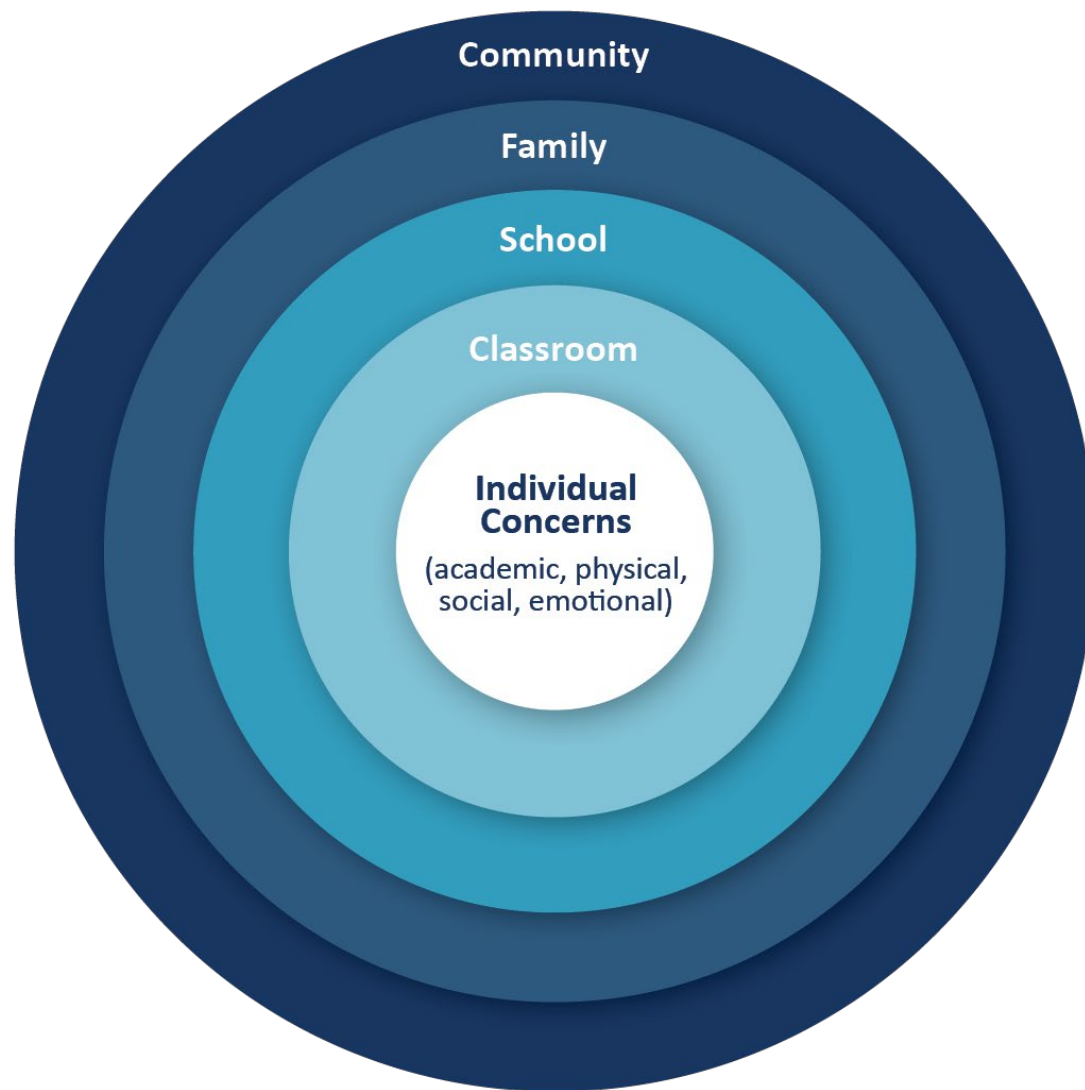


- **Look** beyond the indicators to consider underlying factors.
- **Identify** the student's strengths.
- **Explore** additional quantitative and qualitative data sources.
- **Determine** potential underlying root causes.

Why is this occurring?



Consider Conditions





Consider Characteristics

What characteristics may be contributing to or influencing an underlying root cause?

Characteristics: factors that belong or are connected to a student, such as a demographic trait or a designation.





Guiding Questions



- What are the student's/students' strengths?
- What patterns do we see?
- Why is this problem occurring?
- What conditions or characteristics might have an influence on the root cause(s)?
- What other information do we need?



Sample Probing Questions Related to **Attendance**



- Is there a certain day of the week or time of day when the student is frequently absent?
- Which classes is the student missing?
- Who are the teacher and classmates in that class/those classes?
- Has the student's attendance been affected by suspension?



Sample Probing Questions Related to **Behavior**

- What behavior(s) contributed to the behavior flag?
- How is the problem behavior being addressed?
- What is the nature of the student's relationship with the teacher or staff person who is disciplining him or her?
- When does the student typically have behavioral issues?
- Does the student have special needs that should be taken into consideration?
- Question for adults who know the student well: What are the student's triggers?

Sample Probing Questions Related to **Course Performance**

- Which classes did the student fail?
- How many other students are failing this course or this period?
- In which types of classes is this student enrolled (e.g., remedial reading, advanced placement)?
- How has the student done in this subject previously?





Implementation Suggestions



1. ***Invoke*** shared agreements.



Implementation Suggestions



2. *Create* a real-time “watch list.”



Implementation Suggestions



3. Maximize resources with group interventions.



Group Interventions



- **Review** groups of flagged students.
- **Identify** similar underlying causes.
- **Develop** group interventions.



Maximizing Resources



- What are the most prominent needs across grade levels, subgroups of students, and our school?
- How will we prioritize the student needs we have identified?
- How are the needs aligned with our school goals?
- What additional data or resources do we need?



Step 4 Challenge: **Duplication of Effort**

- Take stock of existing teams in the school.
- Review initiatives that serve a purpose similar to EWIMS.
- Where is data currently being reviewed? Can EWIMS data be integrated?



Step 4 Challenge: **Jumping to Conclusions**

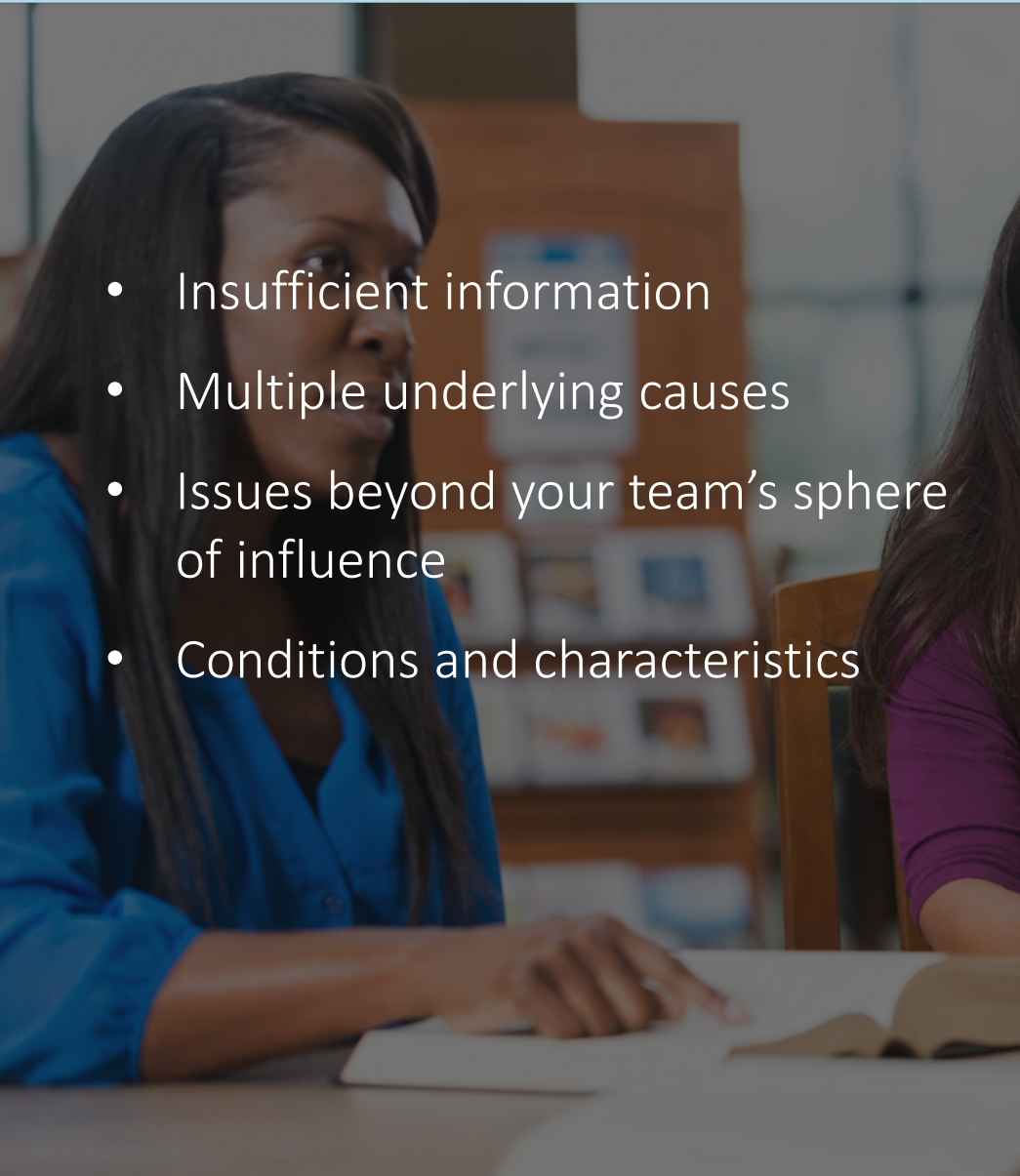
- Resist the temptation to act before fully understanding a problem.
- Record the potential underlying causes to hold the team accountable.
- Designate team meeting time to consider whether the group is jumping to conclusions before assigning next steps.





Step 4 Challenge: **Getting Stuck**

- Insufficient information
- Multiple underlying causes
- Issues beyond your team's sphere of influence
- Conditions and characteristics

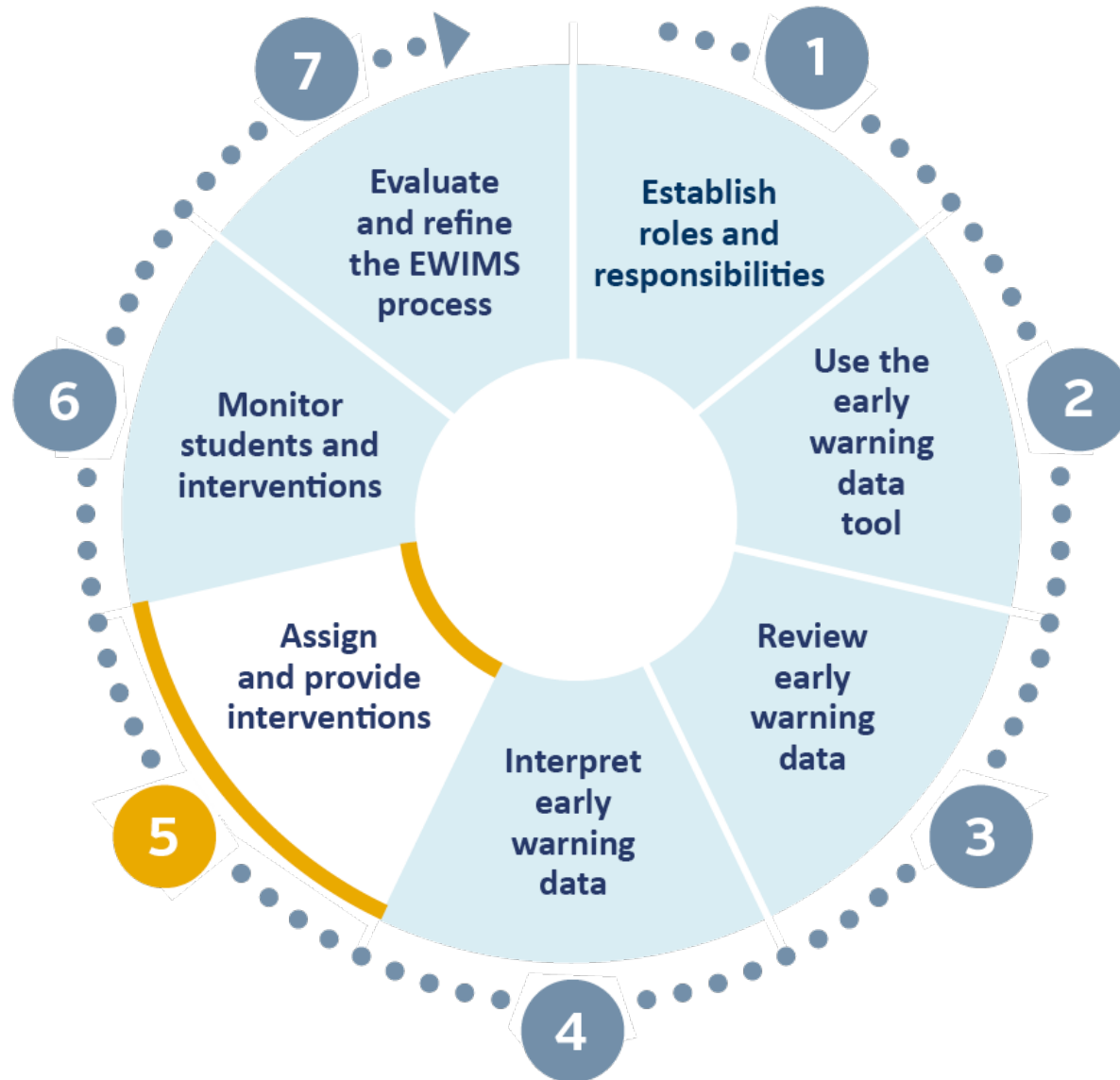




Final Thoughts

Discuss and address
underlying root causes
before identifying
interventions.

Coming Up Next



earlywarningsystems@air.org

10 S. Riverside Plaza, Suite 600
Chicago, IL 60606-5500
General information: (312) 288-7600
www.air.org

**Michigan Data Hub Early Warning
Data Tool:**

Support@MIDataHub.org

Michigan Data Hub
1819 E. Milham Road
Portage, MI 49002
(269) 250-9264

References

- Allensworth, E., & Easton, J. Q. (2005). *The on-track indicator as a predictor of high school graduation*. Chicago, IL: Consortium on Chicago School Research.
- Allensworth, E., & Easton, J. Q. (2007). *What matters for staying on-track and graduating in Chicago public high schools: A close look at course grades, failures, and attendance in the freshman year*. Chicago, IL: Consortium on Chicago School Research.
- Alliance for Excellent Education. (2013). *Indiana high schools*. Washington, DC: Author. Retrieved from http://all4ed.org/wp-content/uploads/2013/09/Indiana_hs.pdf
- Bruce, M., Bridgeland, J. M., Fox, J. H., & Balfanz, R. (2011, November). *On track to success: The use of early warning indicator and intervention systems to build a grad nation*. Washington, DC: Civic Enterprises. Retrieved from <http://files.eric.ed.gov/fulltext/ED526421.pdf>
- Editorial Projects in Education. (2011). Diplomas count 2011: Beyond high school, before baccalaureate. *Education Week*, 30(34).

References

IES. [https://nces.ed.gov/ccd/tables/ACGR RE and characteristics 2014-15.asp](https://nces.ed.gov/ccd/tables/ACGR_RE_and_characteristics_2014-15.asp)

Julian, T. A., & Kominski, R. A. (2011). *American Community Survey Reports: Education and synthetic work-life earnings estimates (ACS-14)*. Washington, DC: U.S. Census Bureau.

Therriault, S. B., O’Cummings, M., Heppen, J., Yerhot, L., & Scala, J. (2013). *High school early warning intervention monitoring system implementation guide*. Washington, DC: American Institutes for Research, National High School Center. Retrieved from <http://www.earlywarningsystems.org/resources/early-warning-system-high-school-implementation-guide/>

Therriault, S. B., O’Cummings, M., Heppen, J., Yerhot, L., & Scala, J. (2013). *Middle Grades early warning intervention monitoring system implementation guide*. Washington, DC: American Institutes for Research, National High School Center. Retrieved from <http://www.earlywarningsystems.org/resources/early-warning-system-middle-grades-implementation-guide/>