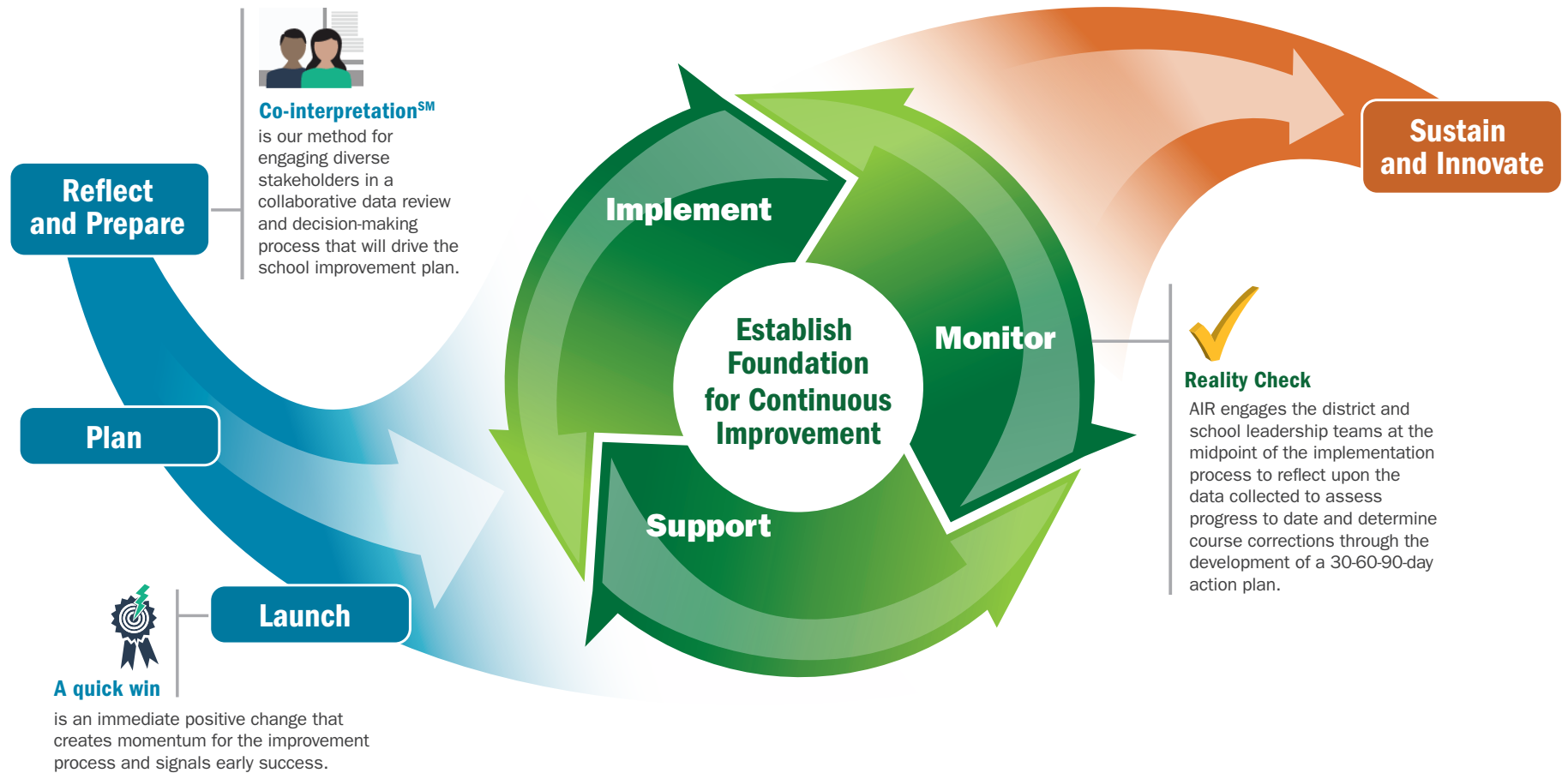


The School Improvement Path illustrates the collaborative journey that American Institutes for Research (AIR) undertakes with districts and schools to guide a process of continuous improvement. AIR's approach is grounded in school improvement research, implementation science, and AIR's extensive, hands-on experience in the field. Our aim is to work collaboratively with the district to build sustainable systems for Comprehensive and Targeted Improvement schools that address equity for all students. AIR partners with districts and school leadership teams to implement the following school improvement phases:



The School Improvement Path illustrates the collaborative journey that American Institutes for Research (AIR) undertakes with districts and schools to guide a process of continuous improvement. AIR's approach is grounded in school improvement research, implementation science, and AIR's extensive, hands-on experience in the field. Our aim is to work collaboratively with the district to build sustainable systems for Comprehensive and Targeted Improvement schools that address equity for all students. AIR partners with districts and school leadership teams to implement the following school improvement phases:

Reflect and Prepare

The district and AIR will collaborate to engage stakeholders in a needs assessment and co-interpretationSM process that examines the equity of resources and opportunities, and their alignment with student achievement.

Plan

The district and AIR will collaborate to develop an improvement plan that includes a coherent theory of action and goals to guide improvement, evidence-based practices aligned with identified needs, clear roles and responsibilities to develop ownership of the plan among the staff, and strategies for equitable allocation of resources to ensure the plan can be successful.

Launch

The district and AIR will collaborate to align district-level resources to support improvement, plan for quick wins, and execute a communication strategy to establish stakeholder engagement.

Implement

The district and AIR will collaborate to implement evidence-based practices defined in the improvement plan in conjunction with a continuous improvement process.

Support

The district and AIR will collaborate to provide leaders, teachers, and staff with targeted, relevant, and job-embedded professional learning experiences, coaching, and opportunities to engage with peers across or outside the district.

Monitor

The district and AIR will collaborate to regularly monitor both implementation and effectiveness of evidence-based practices, including a midpoint Reality Check in alignment with the theory of action and goals.

Sustain and Innovate

The district and AIR will collaborate to identify sustainable tools and practices that support a culture for continued growth and development of leaders, teachers, and staff.